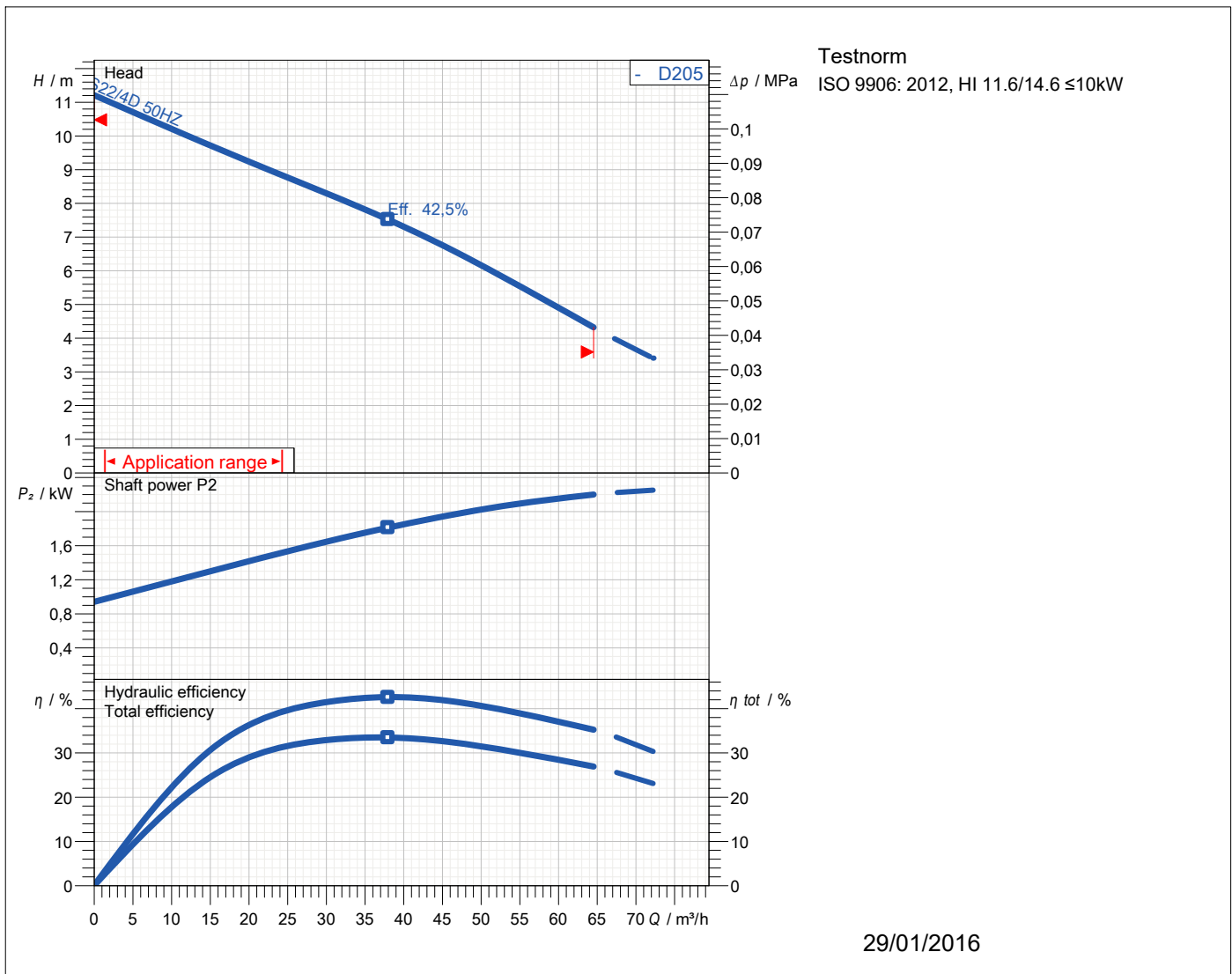


Product description



Pos.no	Description	Item no.	Quant.	UP / EUR	TP / EUR
	AS 0630 D 50 HZ				
	<p>Centrifugal pump: AS 0630 D</p> <p>AS</p> <p>Type:AS 0630 D</p> <p>Submersible wastewater pump type ABS AS range is from 1 to 3.5 kW for the dewatering of buildings and sites in private, commercial and communal areas as well as industrial applications.</p> <p>Water pressure-tight encapsulated fully flood-proof motors in standard or explosion proof versions. Hydraulics with CB (ContraBlock) system or vortex impellers. Suitable for portable as well as stationary installations.</p> <p>Capacity up to 80 m3/h</p> <p>Head, max. 35 m</p> <p>Type:AS 0630 D</p> <p>Technical data</p> <p>Delivery rate : Delivery head : Hydr. efficiency : Shaft power : Speed : 1412 1/min Impeller type : Vortex impeller Motor output : 2,2 kW Voltage : 400 V Frequency : 50 Hz Discharge outlet : DN65</p>		1	On req.	On req.
				Total Price	On req.

AS 0630 D 50 HZ

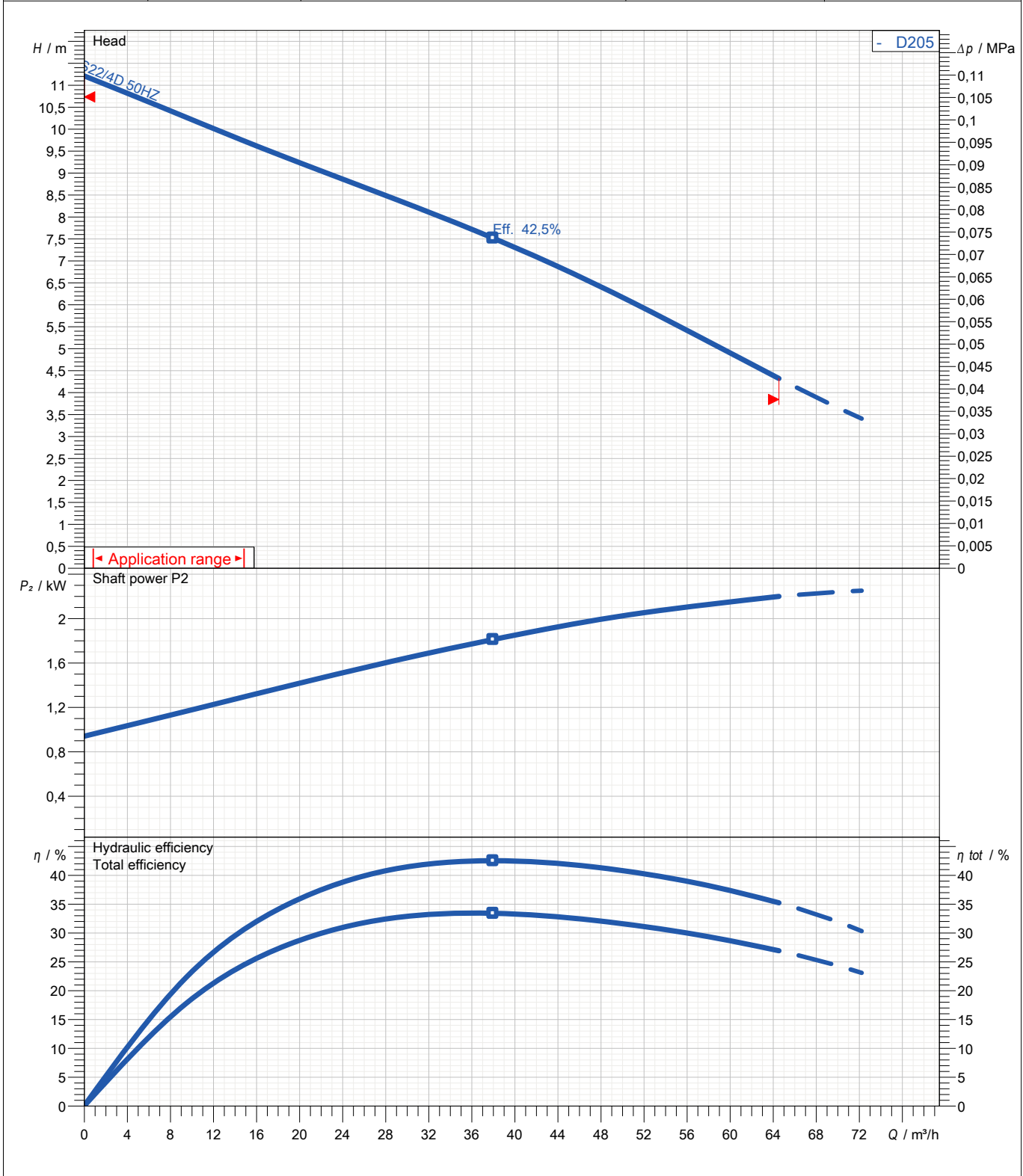


Operating data specification		Head	
Flow		Shaft power	
Efficiency		Fluid	Water
NPSH		Nature of system	Single head pump
Temperature	20 °C		
No. of pumps	1		
Pump data		Make	
Type	AS 0630 D 50 HZ	Impeller	SULZER
Series	AS	Impeller size	Vortex impeller
N° of vanes	6	Suction port	205 mm
Free passage	60 mm		
Discharge port	DN65		
Motor data		Frequency	
Rated voltage	400 V	Nominal Speed	50,0 Hz
Rated power P2	2,2 kW	Efficiency	1380 1/min
Number of poles	4	Rated current	76,3 %
Power factor		Rated torque	5,15 A
Starting current	19,4 A	Degree of protection	15,2 Nm
Starting torque	31,5 Nm	No. starts per hour	IP 68
Insulation class	F		15

Curve number	Pump performance curves AS 0630 D 50 HZ
Reference curve AS 0630 D 50 HZ	



			Discharge DN65	Frequency 50 Hz
Density 998,3 kg/m ³	Viscosity 1,005 mm ² /s	Testnorm ISO 9906: 2012, HI 11.6/14.6 ≤10kW	Rated speed 1412 1/min	Date 29/01/2016
Flow	Head	Rated power	Hydraulic efficiency	NPSH



Impeller size 205 mm	N° of vanes 6	Impeller Vortex impeller	Solid size 60 mm	Revision
-------------------------	------------------	-----------------------------	---------------------	----------

Sulzer reserves the right to change any data and dimensions without prior notice and can not be held responsible for the use of information contained in this software.

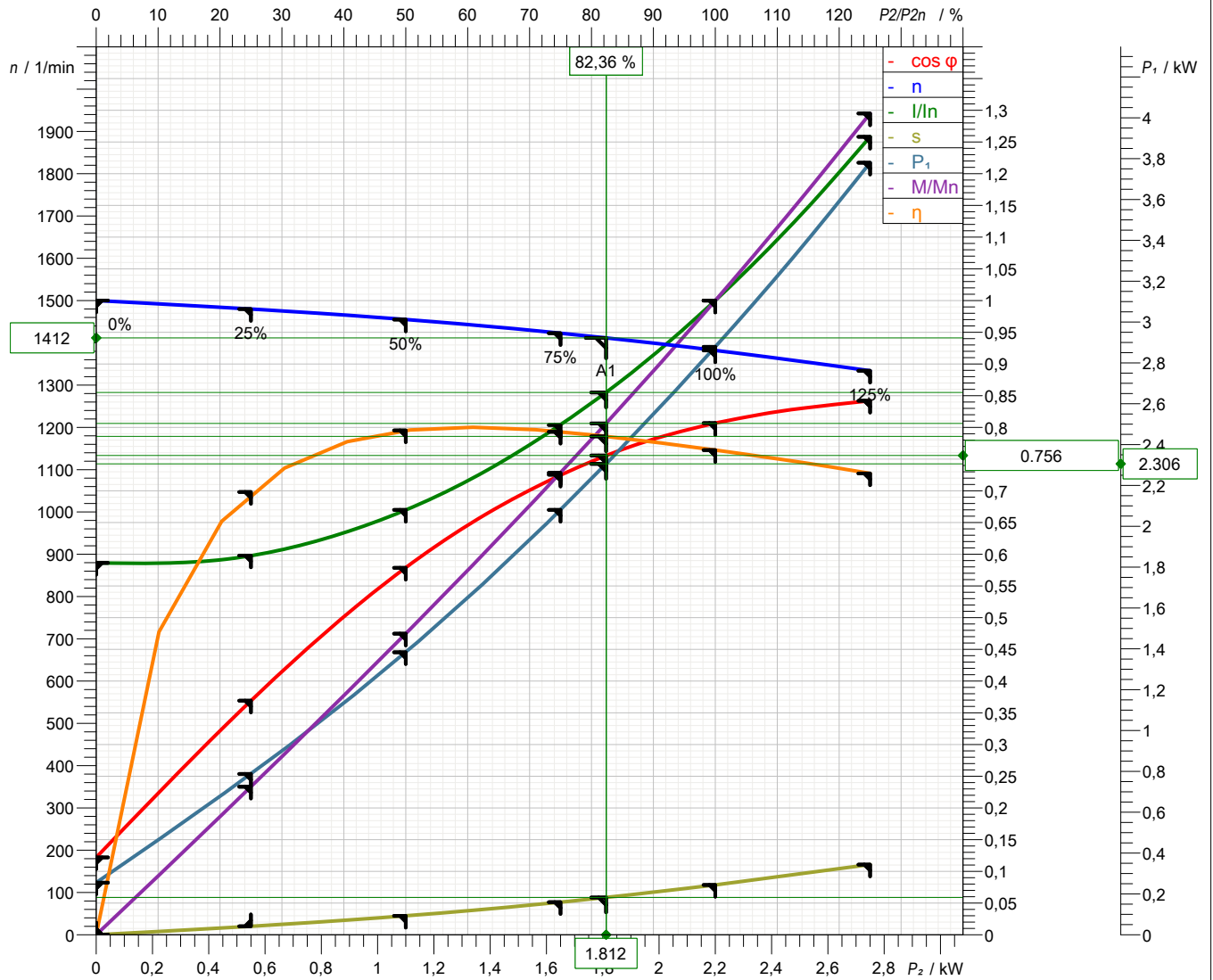
Frequency
50 Hz

Motor performance curve

S22/4D 50HZ



Rated power 2,2 kW	Service factor 1	Nominal Speed 1380 1/min	Number of poles 4	Rated voltage 400 V	Date 29/01/2016
-----------------------	---------------------	-----------------------------	----------------------	------------------------	--------------------



Symbol	No load	25 %	50 %	75 %	100 %	125 %
P_2 / kW	0	0,55	1,1	1,65	2,2	2,75
P_1 / kW	0,2552	0,7878	1,383	2,08	2,879	3,78
η / %	0	69,82	79,53	79,31	76,42	72,75
n / 1/min	1500	1480	1455	1423	1382	1334
$\cos \phi$	0,122	0,3692	0,5786	0,7254	0,8068	0,842
I / A	3,02	3,08	3,45	4,14	5,15	6,48
s / %	0	1,339	2,989	5,144	7,861	11,07
M / Nm	0	3,549	7,219	11,07	15,2	19,69

Tolerance according to VDE 0530 T1 12.84 for rated power

Starting current 19,4 A	Starting torque 31,5 Nm	Moment of inertia 0,00267 kg m ²	No. starts per hour 15
----------------------------	----------------------------	------------------------------------------------	---------------------------

SULZER

Massblatt AS0630 Transportable

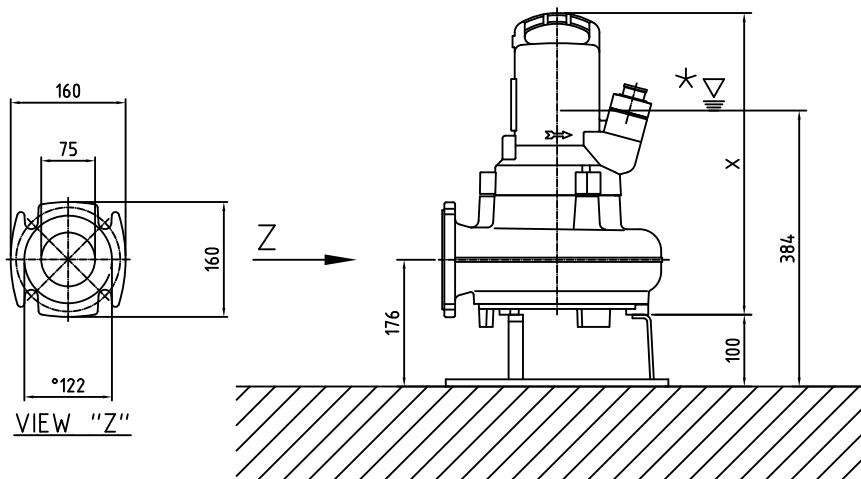
Dimension sheet

Plan d'encombrement

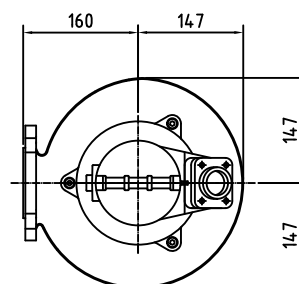
No: AN-M.12.59.02

Drawn: 12.12.02 / C.Quirke

Issue Date: 07.04.05

Änderungen vorbehalten
Technical changes reserved
Con riserva di modifiche
Con reserva de modificaciones
Sous réserve de modification

★ LOWEST SWITCH OFF POINT FOR AUTOMATIC OPERATION



Type.	Dim "X"
AS0630 S10/4	420
AS0630 S13/4	420
AS0630 S22/4	433
AS0630 S16/4	420
AS0630 S25/4	433

SULZER

Maßblatt AS0630 S10/4 - S25/4

Dimension sheet

Plan d'encombrement

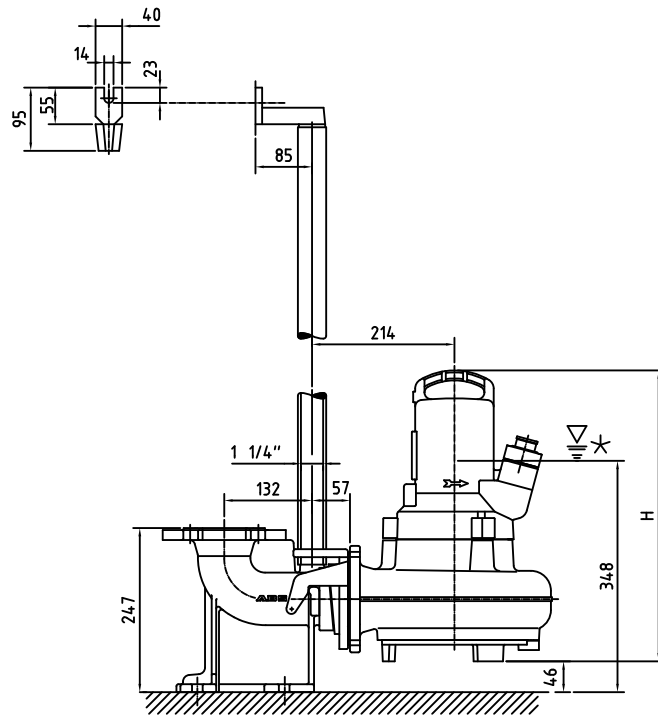
No: AN-M 12.34-02

Date/Name:02.07.98/C.Quirke

Cad Code:G:\ANM12034

Änderungen vorbehalten
Technical changes reserved
Con riserva di modifiche
Con reserva de modificaciones
Sous réserve de modification

50Hz	60Hz	H
S10/4	S10/4	437
S13/4	S16/4	437
S22/4	S25/4	450



* LOWEST SWITCH OFF POINT FOR AUTOMATIC OPERATION

